

Communications, Power and Electronics after a hurricane

Lu Vencl, Communications Engineer

Overview

- Generators (how, what, why)
- Fuel Storage Options
- AC/DC inverters (great temporary power)
- Radio / TV reception
- Communications after the storm
- Text Messaging
- Analog Phone (A must have!)

Generators

- Sizing your Generator.
- How much do you need to run?
- Larger generators burn more gas.
- Get small room AC unit for cooling down room.



Safe Fuel Storage

- Safety Gas Can for storage of gasoline and flammable liquids.
- Meets OSHA requirements.
- Made of galvanized steel.
- Has a non-sparking pour spout and screen.
- Heavy duty construction. Highest Quality in Safety
- Prevents explosions and fires due to pressure changes and projectiles.



HONDA EU2000i

- Honda Overhead Cam Engine
- Lightweight and Compact
- High Quality, Stable and High Power Output
- Quiet Operation
- Low Fuel Consumption
- Parallel Operation Capability
- Oil Alert®
- Electronic Ignition
- Simultaneous AC/DC use
- Electronic Circuit Breakers
- Inverter (Computer Friendly)
- One Switch for Engine/Fuel Valve On/Off
- USDA-Qualified Spark Arrestor/Muffler
- Fully Enclosed for Quieter Operation
- EcoThrottle™ (load dependent operation)
- 2 Year Residential Warranty
- 1.1 Gallon tank (Run Time on One Tankful 4 hrs. @ rated load 15 hrs. @ 1/4 load)



DC / AC Power Inverter

- AC/ DC inverter works with digital cameras, laptops, camcorders, cell phones, video games, portable work lights, stereo systems, 13" and 20" TV/VCR combos, and 27" TVs. Just hook up to car cigarette lighter.



Budget TV Antenna

- Receive local TV channels when cable service is interrupted with these Radio Shack TV antennas.
- Attaches to antenna port on TV



Satellite Dish

- Go with a dish. If properly installed, you will not lose TV reception.
- Access to the weather channel even when the cable goes out.



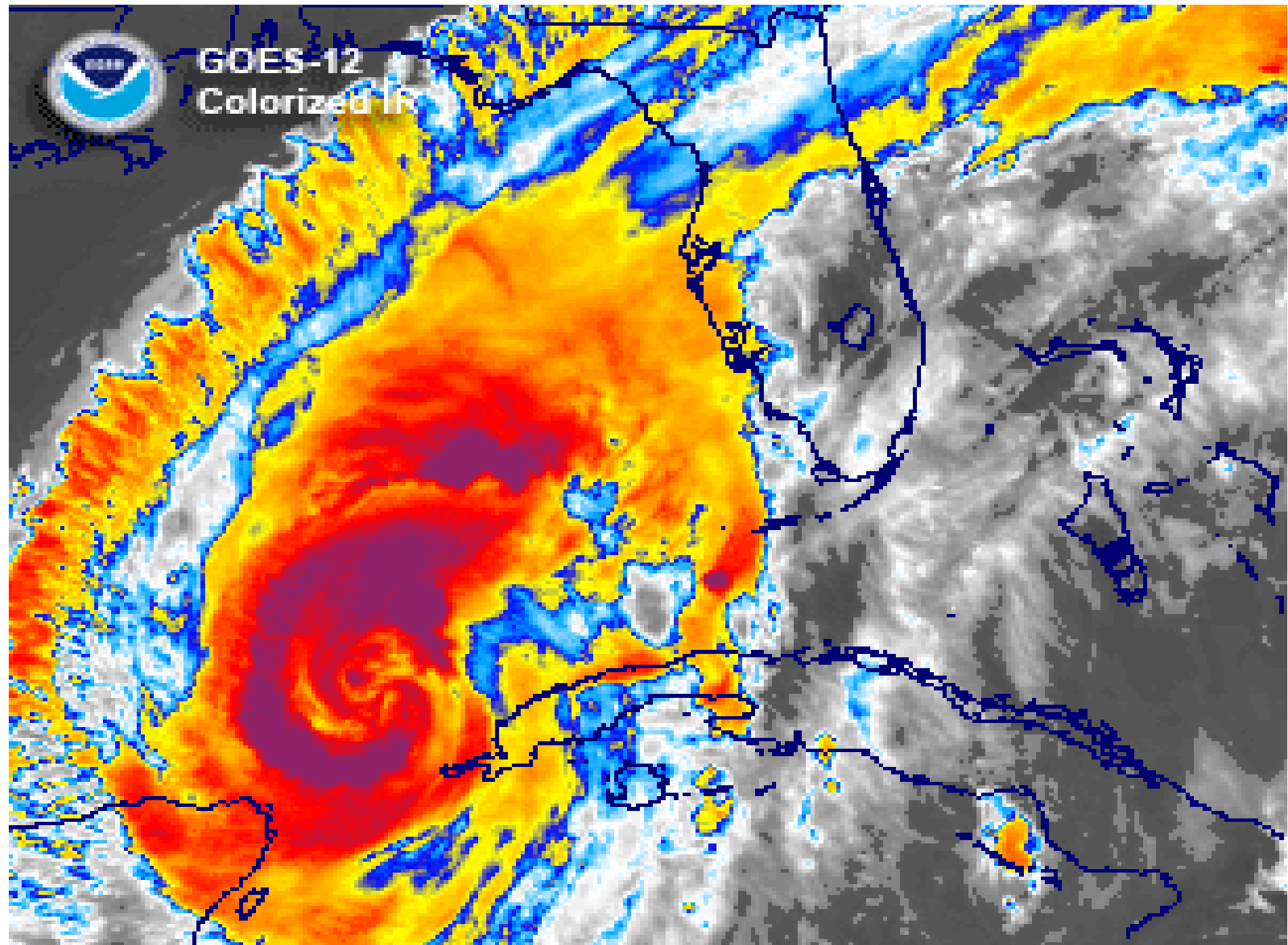
Emergency Communications

- Cell phones offer alternative communications when phone lines go down.
- Towers can also go down depending on damage.
- Priority tower in Deerfield Beach

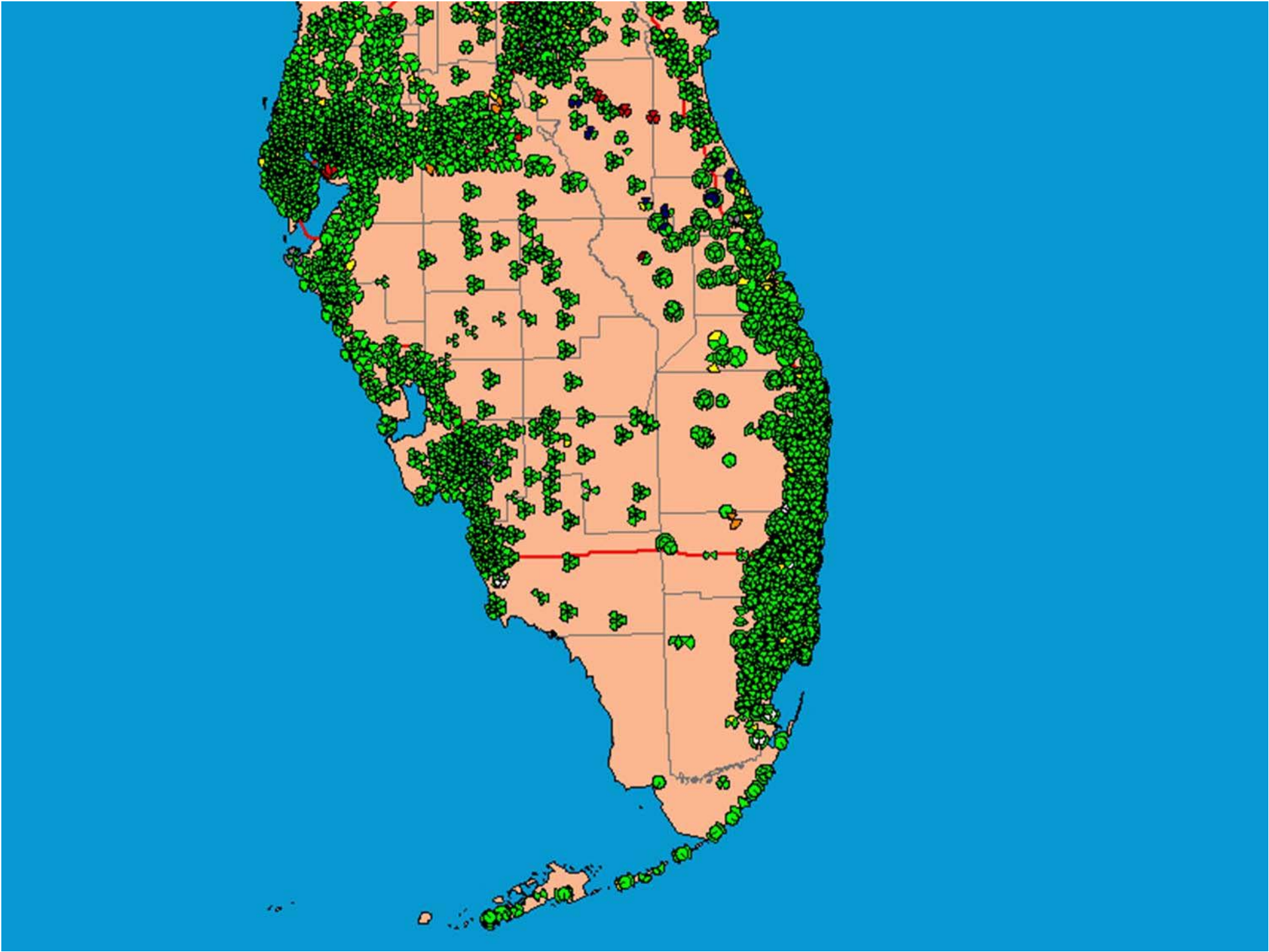


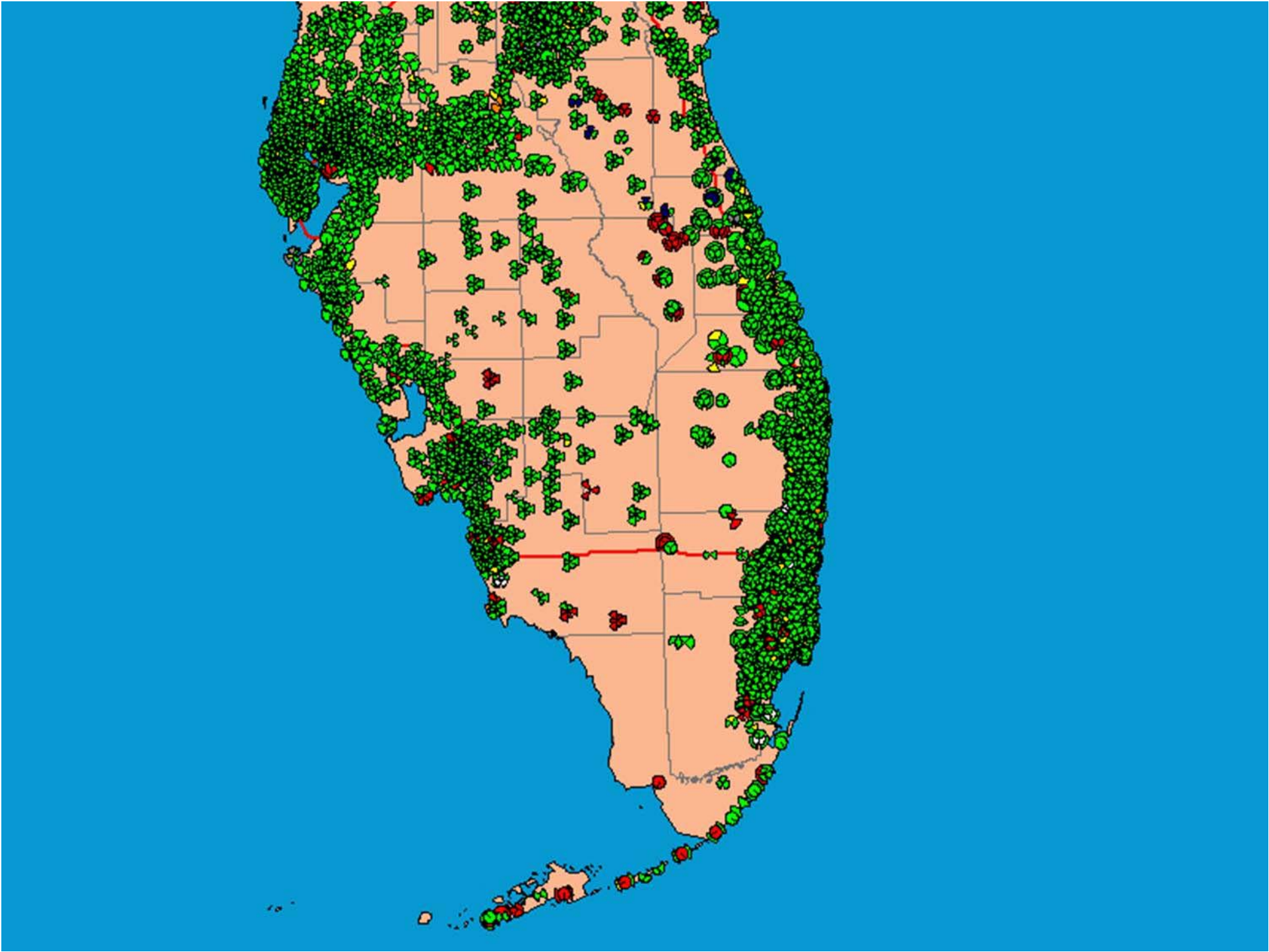


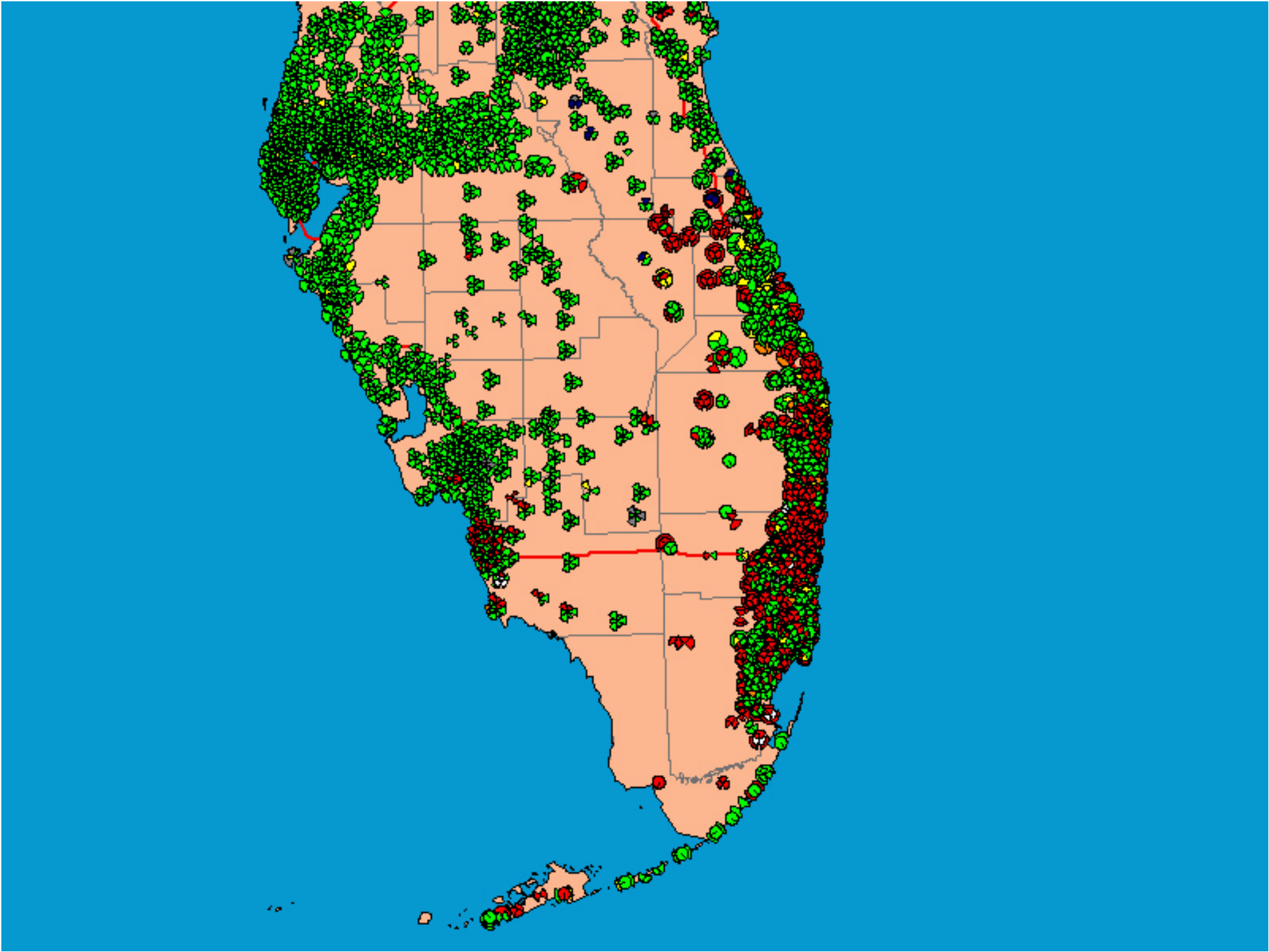
GOES-12
Colorized IR

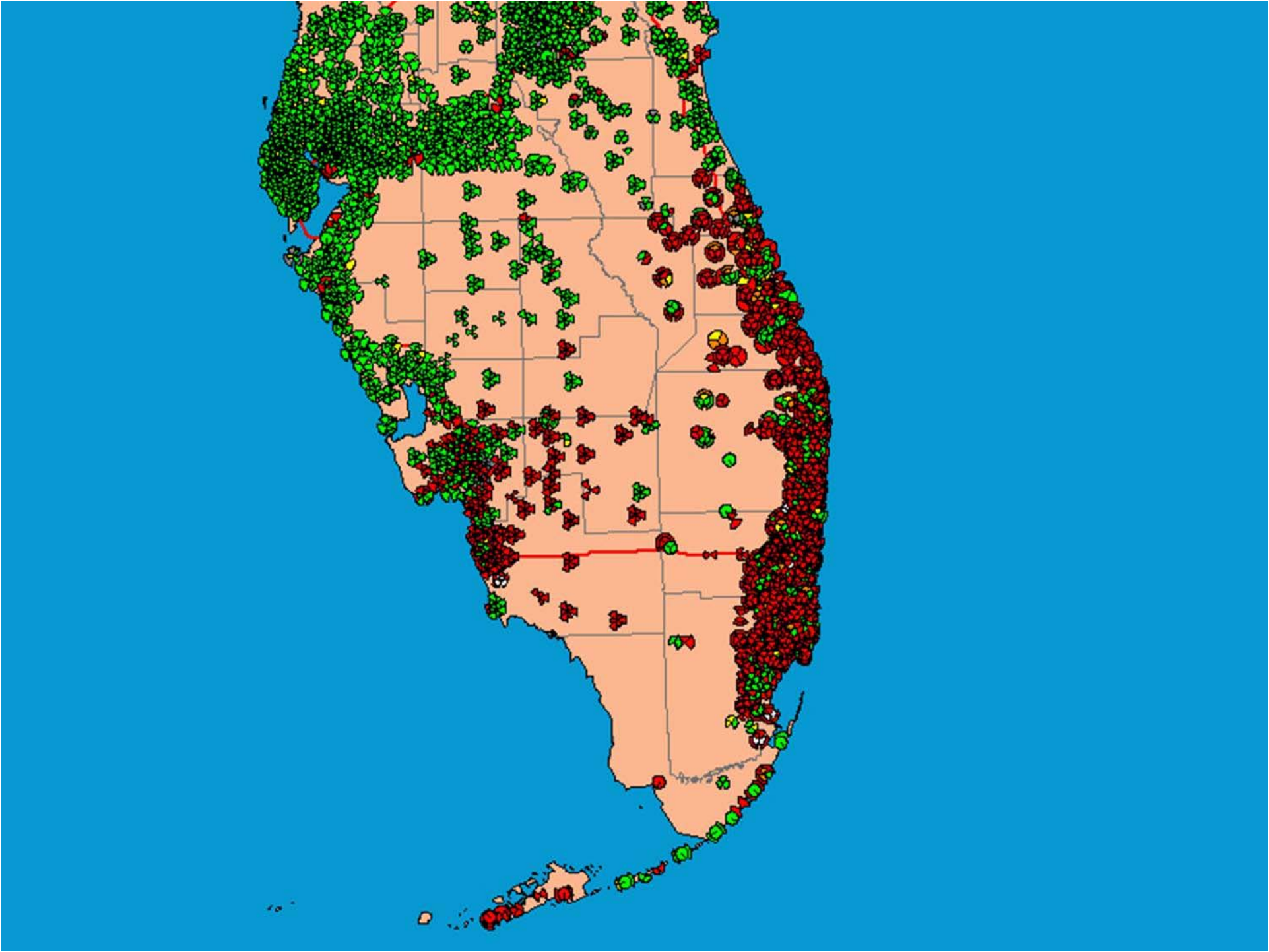


2 WILMA" 23 OCT 05 15:55 UTC









Hurricane Wilma

Many Tower Failures...



Emergency Communications

- COW (Cell Site on Wheels) is deployed if a tower is blown down or if an area needs extra support.



Hurricane Wilma











Cell Phone Preparations

- Obtain cell phone charger that will charge in you car.
- Program emergency contact phone #s
- Learn to use Text Messaging
- Elevation may help with signal



Sending Test Messages

- Give your love ones access to sending you a text message by giving them this link: <http://www.google.com/sendtophone>
- Check with your service provider for your cell phone's email address.
9546950870@mobile.mycingular.com

Google Short Message Service (SMS)

- **SMS Quick Start**
- 1. Start a new text message and type in your search query (Example: hospitals Deerfield Beach, FL)
- 2. Send the message to the number "46645" (GOOGL)
- 3. You'll receive text message(s) with results
- **Tip:** For help send the word 'help' as a text message to 46645.

Analog Wired (old fashion) phone

- No power required to run this phone
- Phone company has generators
- Cable company phone has no generator
- VOIP depends on internet



Lessons Learned

- Stock up on gas!
- Have all of your supplies in advance
- Get rid of cable telephone service
- Satellite is better than cable.
(Never lost the Weather Channel)
- Stock up on oil and extra oil filters for generator
- Have extra power cords (12 Gauge or better)

Questions and Answers

Presentation will be available on
WHOA website at

www.waterfordhomes.org

Email lfv@pobox.com

